



VARNALUX

# DATA SHEET

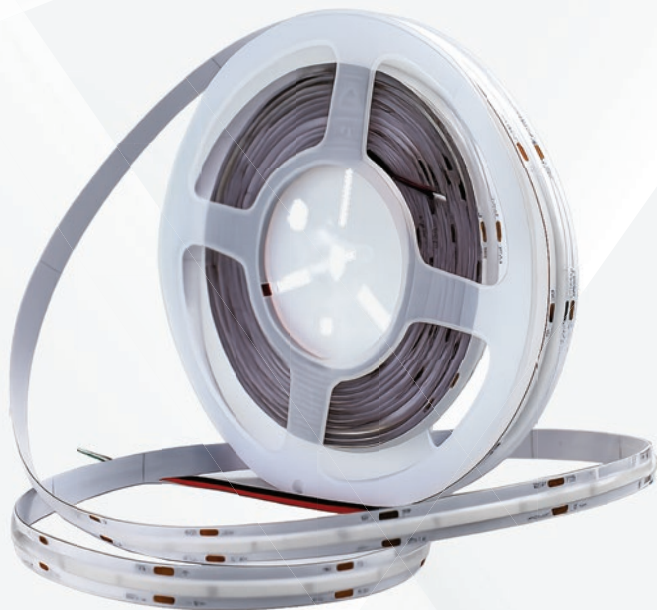
**LED COB STRIPS PREMIUM**

# DATA SHEET



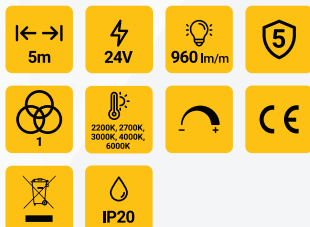
## LED COB STRIP PREMIUM

5 METER 9.6W 24V 2200K, 2700K, 3000K, 4000K, 6000K



### AVAILABLE MODELS

Color Temp	REF No
2200K	907475
2700K	907476
3000K	907477
4000K	907478
6000K	907479



# DATA SHEET



## LED COB STRIP PREMIUM

5 METER 9.6W 24V 2200K, 2700K, 3000K, 4000K, 6000K

### ELECTRICAL DATA

Wattage	9.6W/m
Input Voltage	DC24V
Operating Current	≈0.34A
CRI:	>90Ra
EFF:	>90lm/w

### CAPABILITIES

LEDs/m	120
Lumen	960 lm/m
Kelvin	2200K, 2700K, 3000K, 4000K, 6000K
Color	Two-sided PCB Electrolytic copper
PCB material:	White
Illumination Range	1-3m
Dimmable	Yes
Operating Temperature	-25°C - +60°C
Storage Temperature	-40°C - +80°C

### LIFESPAN & WARRANTY

Lifespan	50.000 hrs
Warranty	5 years

### DIMENSIONS & PACKAGING

Product Dimensions	5000x8x2.3 mm
Outer box	60pcs. (300m)
LED QTY	320 pcs/meter

### ADDITIONAL INFORMATION

IP Rating	IP20
Certificates	CE, RoHS

### AVAILABLE MODELS

Color Temp	REF No
2200K	907475
2700K	907476
3000K	907477
4000K	907478
6000K	907479



# DATA SHEET



## LED COB STRIP PREMIUM

5 METER 9.6W 24V 2200K, 2700K, 3000K, 4000K, 6000K

### CONVENTIONAL COLOR TEMPERATURE TABLE

#### CCT



### CRI COMPARISON TABLE

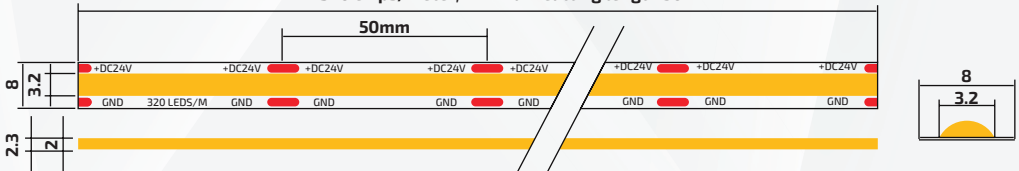
#### CRI



**Ra80+**  
**Ra90+**

### CRI COMPARISON TABLE

320 chips/meter, minimum cutting length 50mm



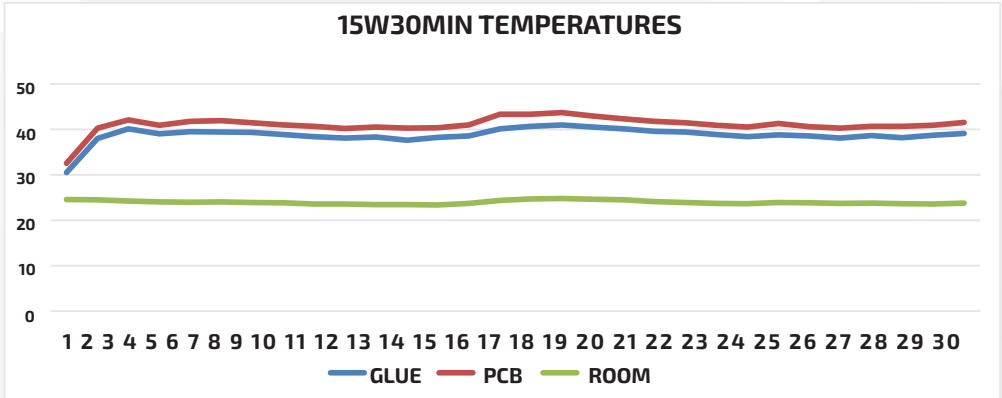
# DATA SHEET



## LED COB STRIP PREMIUM

5 METER 9.6W 24V 2200K, 2700K, 3000K, 4000K, 6000K

### TEMPERATURE CURVE

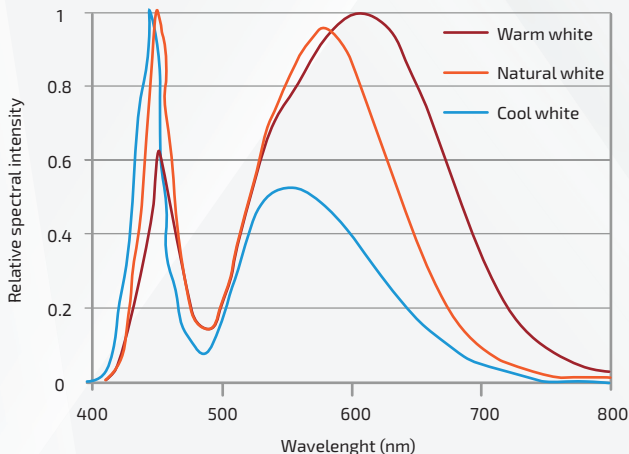


\* The above curves based on 30 minutes testing data. The Temp. changes after powering within 30 minutes.

\* The x-axis indicates the minutes from 1 minutes to 30 minutes.

\* The y-axis indicates the changes of temperatures in Glue, PCB and Room.

### SPECTRAL CHARACTERISTIC CURVE



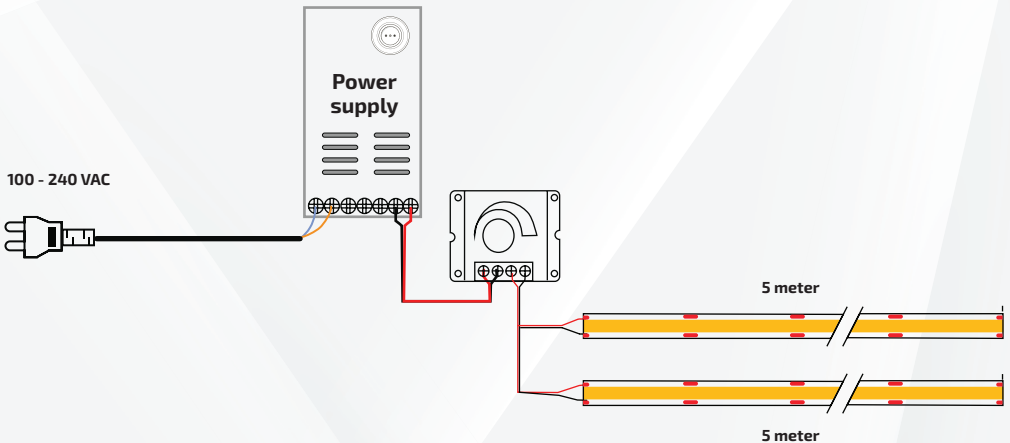
# DATA SHEET



## LED COB STRIP PREMIUM

5 METER 9.6W 24V 2200K, 2700K, 3000K, 4000K, 6000K

### INSTALLATION WAY



\* The max running length is 5 meters, for over 5 meters please connect in parallel.

\* Make sure of the total watts of COB Strip lights is less than 80% of the power supply's max output.

Match the polarities according to the mark ('+' and '-') in the PCB while connecting.

### APPLICATIONS

1. During the installation process, sharp objects should be avoided from touching the surface of the lamp belt to avoid damage to the rubber body and bad production
2. Avoid avoid avoid the light area glue body contact high temperature object body, in order to avoid burning the glue body, shadow the linear effect
3. Choose a DC 24V stable voltage power source to drive, according to the number of lamps to be installed to select a suitable power source; everyThe total power rate of the lamp belt driven by the power source should be lower than 80% of the fixed power rate of the power source.

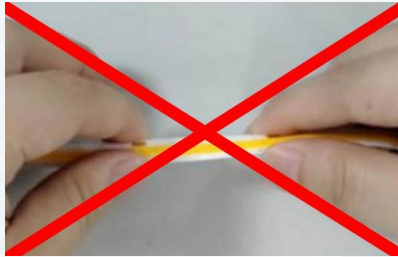
# DATA SHEET



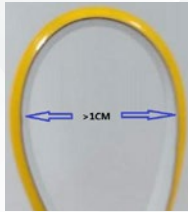
## LED COB STRIP PREMIUM

5 METER 9.6W 24V 2200K, 2700K, 3000K, 4000K, 6000K

4. It is strictly forbidden to bend or bend the lamp belt at a short distance to avoid damage to the rubber strip or damage to the electrical and gas structure in the core piece, as shown in the figure:

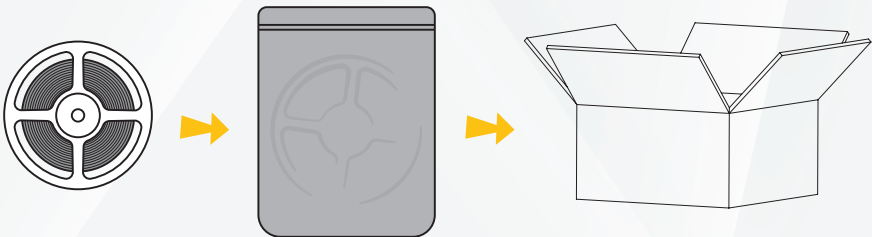


5. The straight diameter of the proposed light belt should be  $>1\text{CM}$ , as shown in the figure:



6. Guard against water and tide.

### PACKAGING



- 5 meters per roll.
- Each roll packed with anti-static bags, and label on it.
- 60 rolls into a outer carton.

5M\*60 Reel/Carton